

VILLAGES on Mount Hope Bay

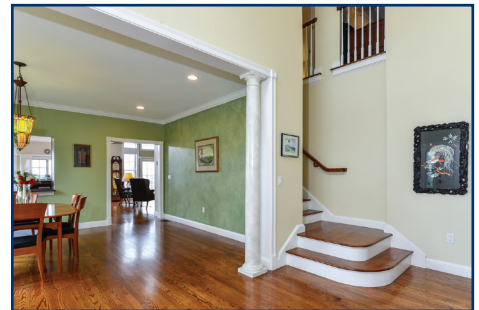
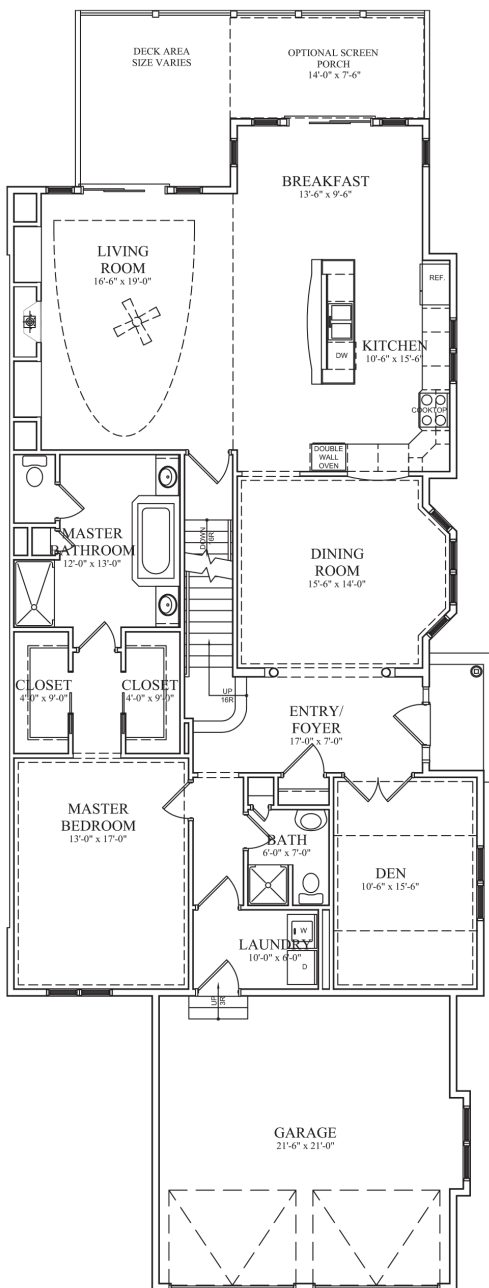
RESIDENCES: LUXURIOUS TOWNHOMES AND MIDRISE CONDOMINIUMS IN RI

19 Leeshore Lane End Unit, Newport Style Townhome

Offered at \$730,000

2,930 Square Ft. on 1st & 2nd floor, plus 2,000 Square Ft. in lower level walkout (unfinished)

FIRST FLOOR



VILLAGES on Mount Hope Bay

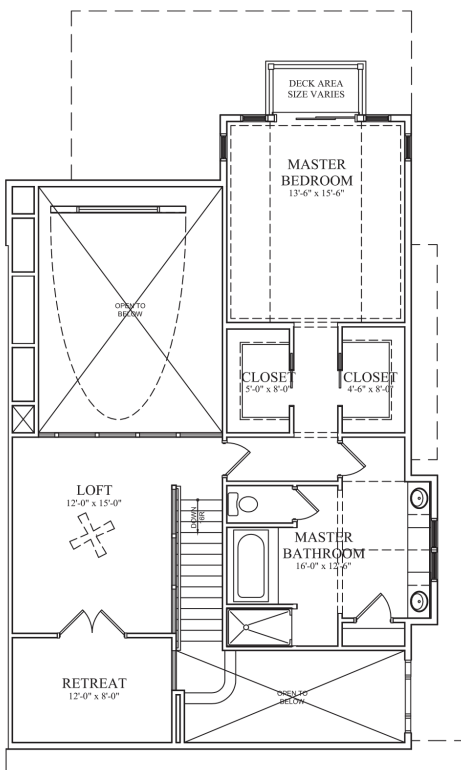
RESIDENCES: LUXURIOUS TOWNHOMES AND MIDRISE CONDOMINIUMS IN RI

19 Leeshore Lane End Unit, Newport Style Townhome

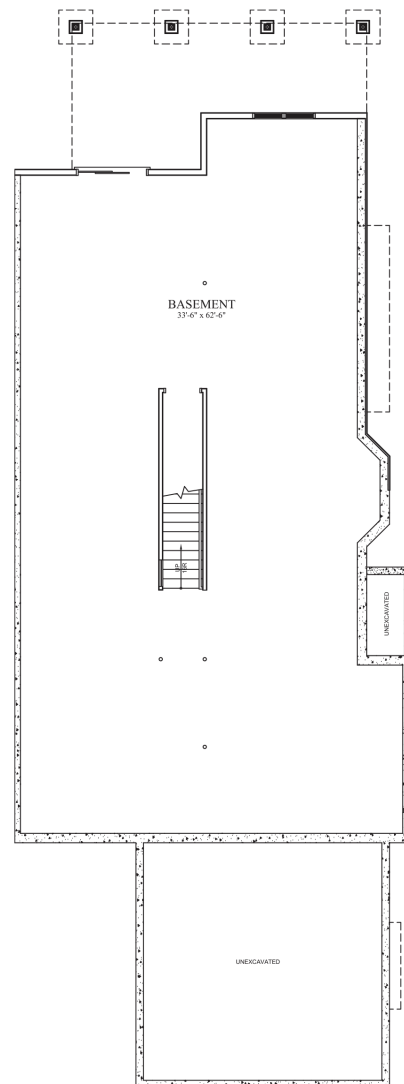
Offered at \$730,000

2,930 Square Ft. on 1st & 2nd floor, plus 2,000 Square Ft. in lower level walkout (unfinished)

SECOND FLOOR



LOWER LEVEL



- 2 Bed, first floor den, loft & formal dining room (plenty of sleeping room for guests)
- 3 Full baths
- Enormous first floor master bed
- 2nd floor master suite water-forward with sliders to juliet balcony, loft sitting room and office retreat
- Mahogany Deck
- Lower level walkout, unfinished. Plumbed for future bathroom and kitchen

Price: \$730,000
Taxes: \$13,500/year
Condo Fee: \$832/month

- Gas Heat, Gas Cooking
- Central Air
- Public Water & Sewer